



DALTON[®] MODULAR CARPET

Dalton[®] is a leading manufacturer of high quality, durable business carpets and carpet tiles for commercial applications such as offices, banks, retail units, public buildings, schools, universities and health care centers. Rhino's Dalton[®] modular carpet tiles are designed to stay on the raised access floors with no up-curl, tapping or ripping. Our square tiles are easier to handle, install and maintain.

RHINO[®]
Strive for perfection!



About Rhino

Access Floor Solutions

Rhino was founded in Bangkok, Thailand in 1997 and designs and builds premium raised access flooring products. Rhino products are used in commercial office building projects, computer rooms, server rooms, data centers, libraries, higher educational institutions, and casinos where there is a requirement for under-floor air conditioning, electrical wiring, and data cabling. We believe that cooperating with customers, suppliers, and leading players in the industry to face challenges together through a win-win strategy is necessary in today's business world. We strive to build more stable partnerships with our customers and suppliers and reinforce strategic cooperation with international and domestic mainstream suppliers.

RHINO

Ancient Trail Colorline

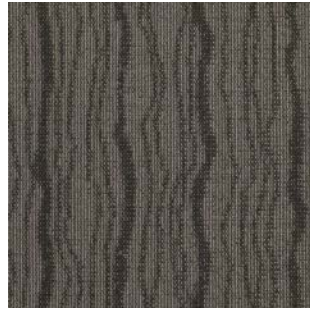
RHINO PROPERTIES



Ancient Trail Colorline



306N-331



306N-332



306N-333



306N-334



306N-335



306N-336



306N-337



306N-338

Specifications

Style Code	306N
Product Definition	Multi-level pattern loop
Yarn/Fibre	100% Nylon 66
Colour System	100% Solution Dyed
Backing	PU
Machine Gauge	1/12
Pile Thickness	3.5mm +/-0.5mm
Total Thickness	9.0mm +/-0.5mm
Tile Size	24" x 24" (609.6mm x 609.6mm)
Area of Use	Commercial – Heavy Duty

Chicago I Colorline

Chicago I Colorline



Chicago 101



Chicago 102



Chicago 103



Chicago 104



Chicago 105



Chicago 106



Chicago 107



Chicago 108

Specifications

Style Code	Chicago I
Product Definition	Tufted Textured Loop
Yarn/Fibre	100% Nylon 66
Colour System	100% Solution Dyed
Backing	PU
Machine Gauge	1/12
Pile Thickness	3.5mm +/-0.5mm
Total Thickness	9.0mm +/-0.5mm
Tile Size	24" x 24" (609.6mm x 609.6mm)
Area of Use	Commercial – Heavy Duty

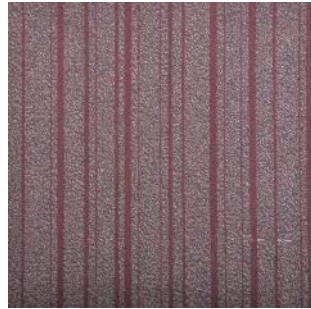
Chicago II Colorline



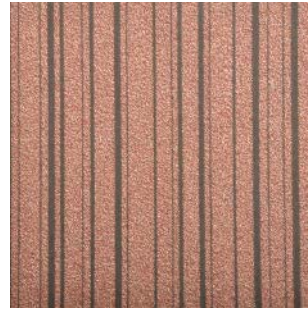
Chicago II Colorline



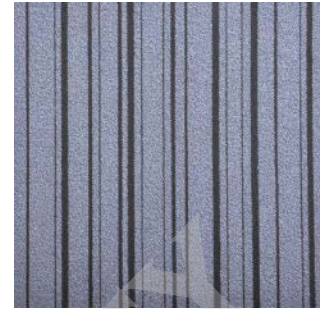
Chicago 201



Chicago 202



Chicago 203



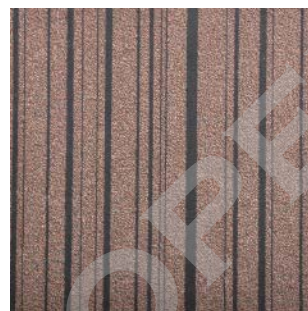
Chicago 204



Chicago 205



Chicago 206



Chicago 207



Chicago 208

Specifications

Style Code	Chicago II
Product Definition	Multi-level pattern loop
Yarn/Fibre	100% Nylon 66
Colour System	100% Solution Dyed
Backing	PU
Machine Gauge	1/12
Pile Thickness	3.5mm +/-0.5mm
Total Thickness	9.0mm +/-0.5mm
Tile Size	24" x 24" (609.6mm x 609.6mm)
Area of Use	Commercial – Heavy Duty

Dream Colorline

RHINO PROPERTY

Dream Colorline



520N-331



520N-332



520N-333



520N-334



520N-335



520N-336



520N-337



520N-338

Specifications

Style Code	520N
Product Definition	Multi-level pattern loop
Yarn/Fibre	100% Nylon 66
Colour System	100% Solution Dyed
Backing	PU
Machine Gauge	1/12
Pile Thickness	3.5mm +/-0.5mm
Total Thickness	9.0mm +/-0.5mm
Tile Size	24" x 24" (609.6mm x 609.6mm)
Area of Use	Commercial – General Duty

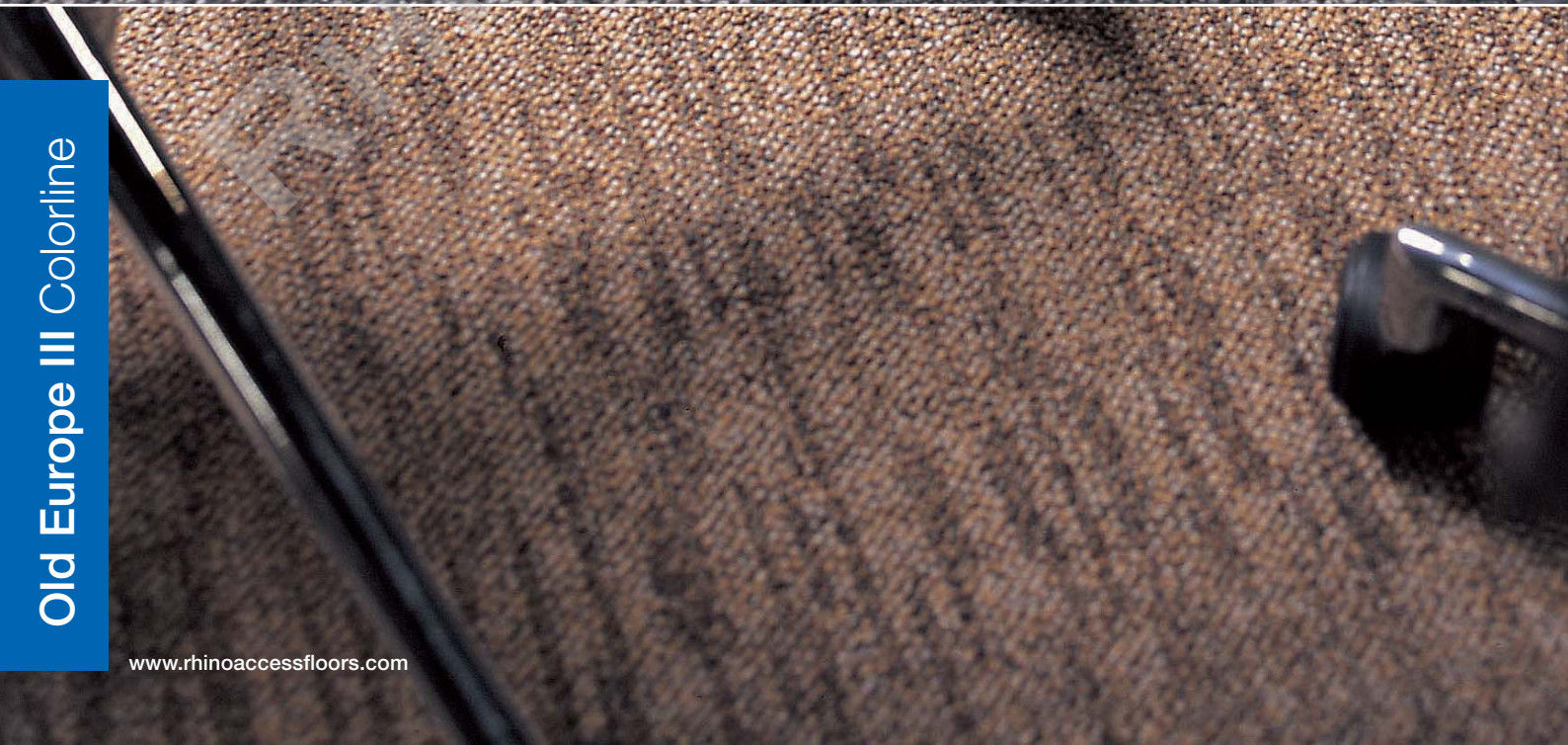
Old Europe I Colorline



Old Europe II Colorline



Old Europe III Colorline



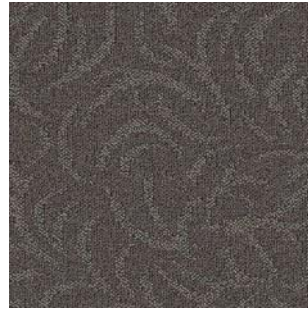
Old Europe Colorline



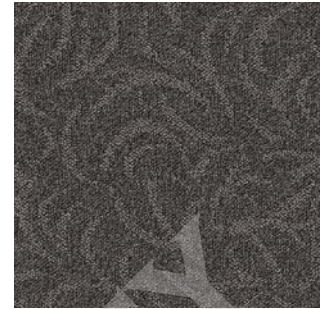
205N-191



205N-192



205N-193



205N-194



206N-191



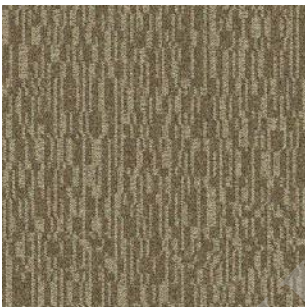
206N-192



206N-193



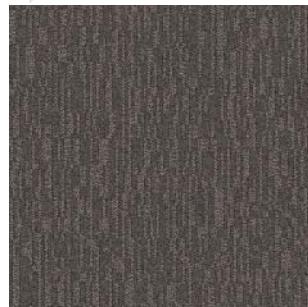
206N-194



207N-191



207N-192



207N-193



207N-194

Specifications

Style Code	Old Europe
Product Definition	Multi-level pattern loop
Yarn/Fibre	100% Nylon 6
Colour System	100% Solution Dyed
Backing	PU
Machine Gauge	1/12
Pile Thickness	3.5mm +/-0.5mm
Total Thickness	9.0mm +/-0.5mm
Tile Size	24" x 24" (609.6mm x 609.6mm)
Area of Use	Commercial – General Duty

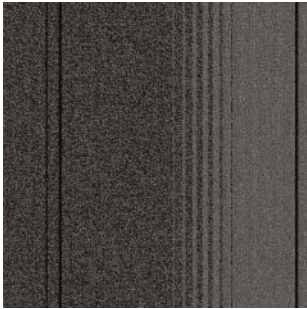
Tide Colorline

DALTON

COMMERCIAL
Carpet tile sample

RHINO ACCESS FLOORS

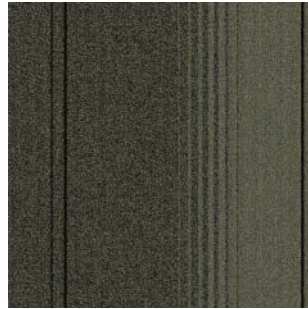
Tide Colorline



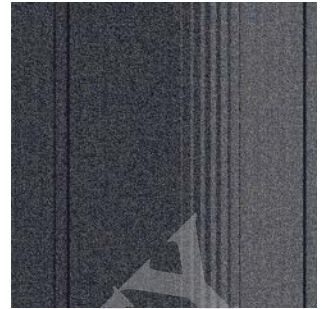
307N-341



307N-342



307N-343



307N-344



307N-345



307N-346

Specifications

Style Code	307N
Product Definition	Multi-level pattern loop
Yarn/Fibre	100% Nylon 66
Colour System	100% Solution Dyed
Backing	PU
Machine Gauge	1/10
Pile Thickness	3.5mm +/-0.5mm
Total Thickness	9.0mm +/-0.5mm
Tile Size	24" x 24" (609.6mm x 609.6mm)
Area of Use	Commercial – Heavy Duty

RHINO[®]

Strive for perfection!

China Office

593, Tongjiang Road
Jintian Plaza 828-830
Changzhou 213022
Jiangsu, China

T/ (86) 519 8988 3171

F/ (86) 519 8988 3901

Bangkok Office

32 Soi Sukhumvit 36 (Napasub)
Sukhumvit Road, Klongton
Klongtoey, Bangkok 10110
Thailand

T/ (662) 661 2990

F/ (662) 661 2991

Hong Kong Office

7/F, Spa Centre
No. 53-55 Lockhart Road
Wai Chai
Hong Kong

T/ (852) 2793 5511

F/ (852) 3590 2333

Production Unit

Hengshanqiao
Wujin District
Changzhou 213119
Jiangsu, China

T/ (86) 519 8860 7959

F/ (86) 519 8860 5659

www.RhinoAccessFloors.com